

MACH 5 CART

NUMERIC UNDERPINNER

Designed for

Bespoke
Framer

Retail
Framer

Medium
Contract Framer

Volume
Contract Framer



Electric supply

110 / 230V single phase
50 / 60 Hz
0,5Kw



The MACH 5 CART works with **Cassese cartridge wedges**

Speed

Moulding capacity

Ease of use

Space required



THE MACH 5 CART FROM CASSESE

is a numeric underpinner (v-nailer) with high speed joining capacity.

The MACH 5 CART has a motorized joining table allowing the pre-adjustment of moulding's width already memorised.

The MACH 5 CART can join high and wide mouldings while ensuring a perfect joining quality thanks to the retractable tightening clamps system.

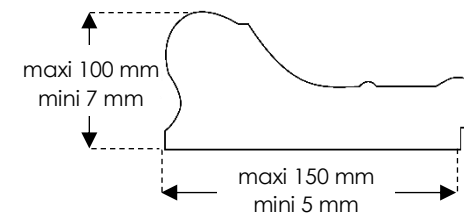
To improve your production time, you can register 3 000 favorites moulding profiles or use the bar code reader option.

The MACH 5 CART uses Cassese cartridge wedges, recognized today as the best on the market and allowing you to load the machine faster.

DIMENSIONS

Length	612 mm
Width	690 mm
Height	1171 mm

MOULDING CAPACITY (mm)



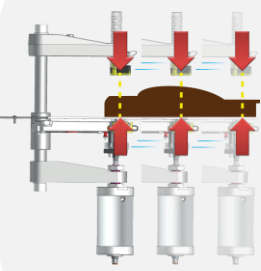
AIR SUPPLY

6 bars

2L / wedge

WEIGHT 100 kg

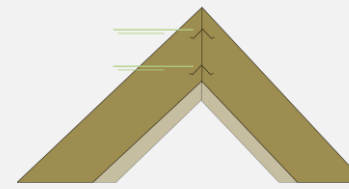
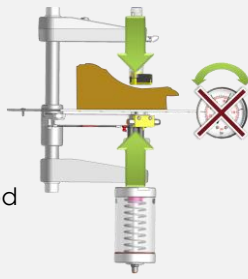
MADE IN
FRANCE



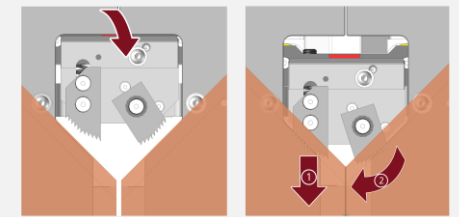
The Smart Wedge Drive System™

Auto-alignment
No need to adjust top clamp placement

Self-adjusting pressure
No need to adjust air pressure between Hardwood and Softwood



High speed joining = 3360 cycles / hour
(with 2 positions per corner)

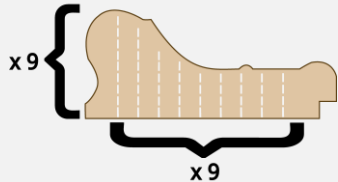


Retractable and very powerful Ultra™ clamps (patented)

User-friendly touchscreen



Quick and Easy joining set up

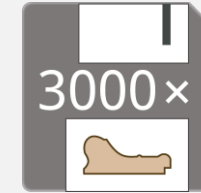


9 wedge positions 9 wedges per position

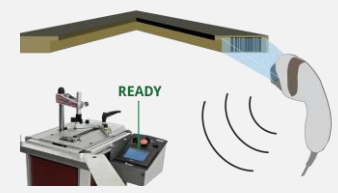


Motorized joining table

Self-adjusts according to the pre-memorized moulding's width



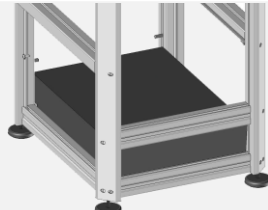
3 000 Favorite Profiles



Barcode Ready
(compatible with MACH, CS486, CS3099 & CS4008 joining files)



Adjustable rod clamp
Magnetic chevron clamp
Solid crossbar



Concrete reinforced structure to absorb vibrations



Quick and easy access to electrical and pneumatic parts



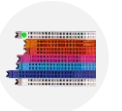
CASSESE CARTRIDGES ARE...



Even stronger (thanks to Power Strip™)



Lubricated = easy stacking



Color coded easy size identification



Glue free = No jammings



Economical



Eco-Friendly (Recyclable Plastic)

INCLUDED ACCESSORIES



1 box of 7mm SW
1 box of 10 mm SW
1 box of 10mm HW



OPTIONAL ACCESSORIES

