

# CS 999

HIGH SPEED DOUBLE MITRE SAW 45°

Designed for

**Bespoke**  
Framer

**Retail**  
Framer

**Medium**  
Contract Framer

**Volume**  
Contract Framer



**Electric supply**

220V (+5%) triple phase (16A)  
380V (+5%) triple phase (10A)



## TYPE OF MATERIAL

The CS999 can cut wood, MDF and plastic mouldings

Speed

Moulding capacity

Ease of use

Space required



## THE CS999 FROM CASSESE

is an automatic double mitre saw 45°. The CS 999 is recognized today as being a saw with very high speed (up to 1,000 cuts per hour) and outstanding quality cut for frame mouldings, in wood, MDF and plastic.

Thanks to a vertical alternative cutting stroke, with adjustable blades' height, you will increase the cutting speed and productivity.

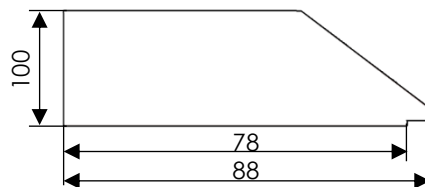
The CS999 is available in both 220V triple phase or 380V triple phase.

Its massive concrete base absorbs vibrations for absolutely perfect cuts, ensuring optimal joining of your frames.

### DIMENSIONS

Length	3,090 mm
Width	834 mm
Height	1,558 mm

### CUTTING CAPACITY (mm)



### AIR SUPPLY

6 bars

2l / cycle

### WEIGHT

575 kg

### MOTOR'S FEATURES

2 motors

1,5kW, 2 hp each

2,800 rpm (50Hz)

3,400 rpm (60Hz)

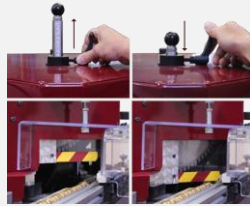
## CUTTING FEATURES

1,000 X /H

**Fast quality production**  
(up to 1,000 cuts per hour)



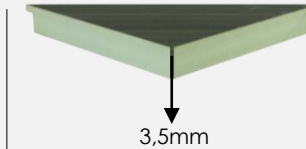
**4 pneumatic clamps**  
2 horizontal + 2 vertical clamps to secure and flatten the mouldings if bent



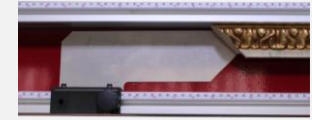
**Adjustable blades' height**  
To set the shorter possible cutting stroke depending on profiles' height, increasing speed and productivity



**Adjustable speed control**  
Allows quality cutting of different hardness of timbers or synthetic mouldings without changing the blades



**Minimum cut-off**  
Thanks to the cutting head design, the cut-off is minimum, saving meters of mouldings



**45° measuring scale**  
Allows a direct, speed and accurate inside or outside measuring

## SAFETY FEATURES



**CE approved**  
Meets the new EU health & safety regulation for dust collection



**Safe design**  
Completely enclosed with no exposed motors or blades with new Lexan™ cover to resist potential splinters from mouldings

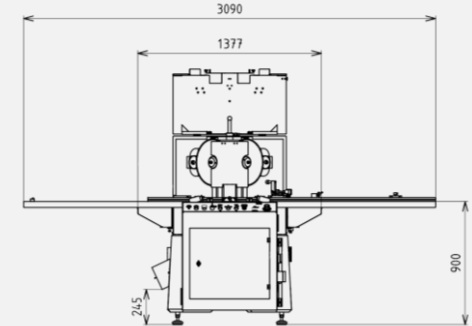
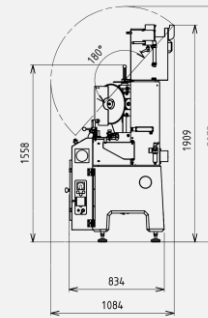


**Ergonomic & safe 2-buttons operation**  
Keeps hands away from the cutting area



**Electronic safety switches**  
The motors cannot be activated while the blades are exposed

## DIMENSIONS



## CONSTRUCTION & ENGINEERING FEATURES



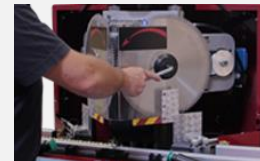
**Solid build & easy duty design**  
Weighing 575, CS999 is engineered with a focus on durability, reliability and safety



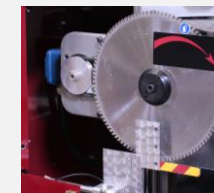
**Cast concrete base**  
Absorbs all vibrations for absolutely perfect cuts



**Cast aluminium cutting head**  
Avoids any disadjustment or play of part for an everlasting reliability



**Easy maintenance**  
Top cover can be easily opened for direct access to blades and belts



**Oversized blade collars**  
To eliminate any possible blade flex and get perfect and accurate cuts



**Reinforced bearings**  
For high quality cuts and durability

## INCLUDED ACCESSORIES



Premium noise reduction carbide blades  
350mm - 14"  
(Z1570)



1,5m (59")  
measuring and support arms

## OPTIONAL ACCESSORIES



Additional right-hand measuring arm :  
- Z28431 for 1m (40")  
- Z28432 for 2m (80")