

CS 2 UNI

PNEUMATIC UNDERPINNER

Designed for

Bespoke
Framer

Retail
Framer

Medium
Contract Framer

Volume
Contract Framer



UNI WEDGES

The CS2 UNI works with "UNI" wedges

Speed

Moulding capacity

Ease of use

Space required



THE CS2 UNI FROM CASSESE

is an underpinner (v-nailer) really easy to use. It has the capacity to join every size of frame (with maximum height of 100 mm).

Thanks to its pneumatic cylinder, the CS 2 UNI allows effortless joining while ensuring perfect joining quality with the patented Smart Wedge Drive System™.

The CS2 UNI uses "UNI" wedges and has an easy system for loading the wedges in order to minimize the loss of time.

MOULDINGS

Width 5 mm - unlimited

Height 7 mm - 100 mm

DIMENSIONS

Length 610 mm

Width 360 mm

Height 1200 mm

WEIGHT 23 kg

AIR SUPPLY 6 bars

CONSUMPTION 1,5l/cycle

MADE IN

FRANCE



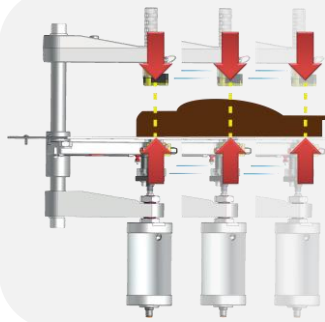
Wide moulding :
14 cm / 6 " stroke



Adjustable rod clamp
Magnetic chevron clamp
Solid crossbar



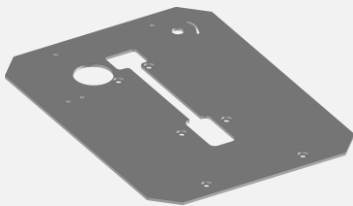
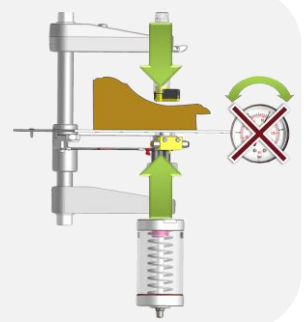
High moulding :
10 cm / 4 "



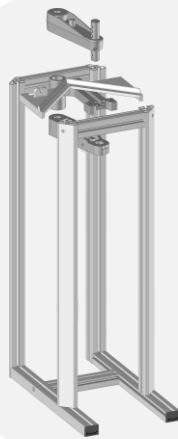
Auto-alignment
No need to
adjust top clamp
placement

The Smart Wedge Drive System™

Self-adjusting pressure
No need to adjust air
pressure between
Hardwood and
Softwood



Stainless steel
working table



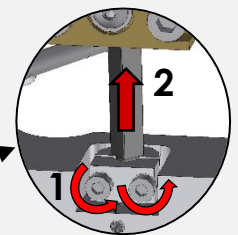
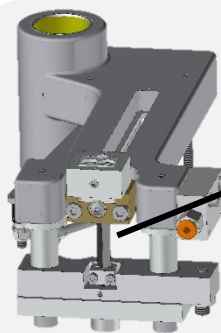
Aluminium structure &
parts for a maximum
durability & minimum
wear and tear



Easy wedge
loading



Quick & easy
wedge positioning



Two-stage & easy wedge
driver replacement

INCLUDED ACCESSORIES



1 box of 10mm HW
(8.000 wedges)

OPTIONAL ACCESSORIES

